

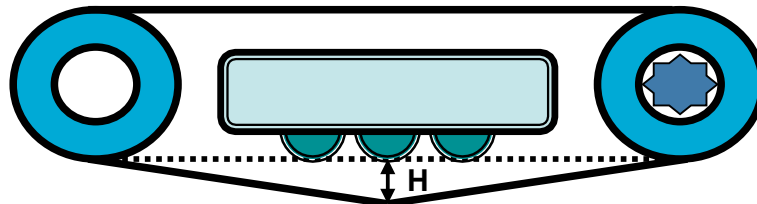
Rubber Tracks

Handling Recommendations

Handling Recommendations

TENSION

Maintain the correct tension on your tracks at all times.



RIGHT DRIVING TECHNIQUE

Avoid driving over sharp projections, narrow path and/or slope.

Avoid fast turning on bumpy and rocky grounds. When making turns ensure that the operator turns slowly by wide radius in the gravel fields and stony ground.

Drive slowly and carefully in the places where working conditions are unfavorable

Be careful when driving on the narrow road or uneven site because it may cause the edge of the rubber track folded or snapped.

Drive slowly in the area where road surface is not favorable such as forest, construction sites, and the unpaved roads. High speed in these areas can cause the breakage of the rubber track.

OPERATION OF THE RUBBER TRACK

Before using the rubber track, be sure to check the tension and keep the recommended (recommended by manufacturer) tension level.

Make sure to remove the impurities or debris held between the frame and the rubber track after operation. If the impurities or debris are not removed, it may cause the edge (side) of the rubber track cracked and ripped.

Undercarriage components : Check regularly the conditions of sprocket, roller, idler and imbedded metal guide. The excessive or unusual abrasion can shorten the life of the rubber track.

Handling Recommendations

To avoid the early breakage of the rubber track, make a large radius when turning and/or changing directions in the area where has uneven surface or high fractional force such as asphalt.

After operation, it is strongly recommended to wash off any debris or stuck materials between rollers and rubber track. Especially it is recommended after operation in wet, muddy, salty and/or swamp fields.

Cautious driving behavior and simple regular clean up can substantially reduce the risk of many damages to rubber track.

To avoid the early breakage of the rubber track, make a large radius when turning and/or changing directions in the area where has uneven surface or high fractional force such as asphalt.

In case of long distance moving, transport the rubber tracked machinery by other vehicles.

When checking the rubber track, make sure to turn off the engine and examine it on even surface area.

When replacing the components such as sprocket, track roller, or idler for new parts, please use the original or equivalent parts. With the inferior quality parts or improper parts use the life of the rubber track may be shortened.

Be sure to use the rubber track for the regulated purpose.

Do not burn the rubber track, and do not get closed to fire or heat source ; the rubber track is inflammable and will produce toxic gas when it burns.

KEEPING AND HANDLING THE RUBBER TRACK

For longer life of the rubber track, avoid sunshine and keep it indoor or use cover. Also keep your vehicle sheltered away from rain and direct sunlight when storing your vehicle for a period of time.

When not in use, be sure to operate the rubber track machinery at least once a month to avoid intensive fatigue on particular areas of the track.

When carrying or handling the rubber track, please use proper handling and transporting tool (or equipment) to avoid accidents.

When using forklift to transport the rubber track, be extra careful because the forklift's prong may damage the product.

Handling Recommendations

REPLACING THE RUBBER TRACK

When replacing the rubber track, make sure to stably fix the equipment in proper place with proper equipment.

Check the conditions of the undercarriage parts (sprocket, idler, track roller) and replace them if needed.

Be sure to turn off the engine and/or power of equipment before replacing the rubber track.

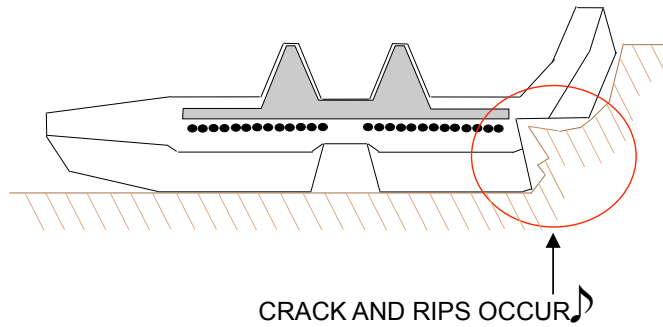
It is important to adjust the center of the sprocket and the idler when replacing the rubber track. If the center of the sprocket does not coincide with the center of the idler it may cause early breakage or serious damage.

Check the tension if it is adjusted as recommended after the replacing.

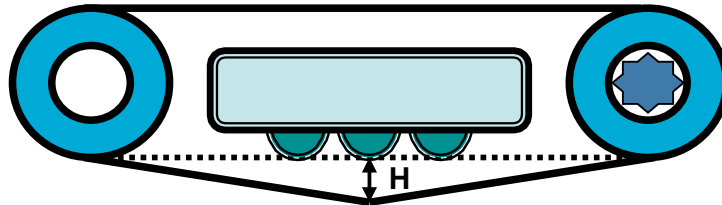
Do not apply excessive force on the rubber track using lever.

To maximize performance and life of your rubber track.....

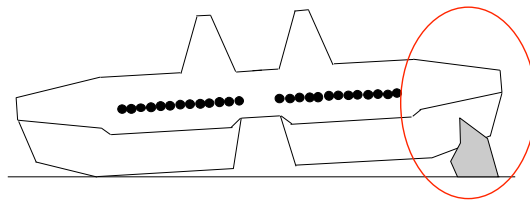
Do not drive with track sidewall edges pressing against hard walls, curbs and other objects.



Maintain the correct tension on your tracks at all times.
Check regularly the conditions of undercarriage components : sprocket, roller, and idler



Do limit the use of your vehicle on sharp rocky and stone surfaces.



Avoid sunshine and keep it indoor when storing your vehicle for a period of time.

